

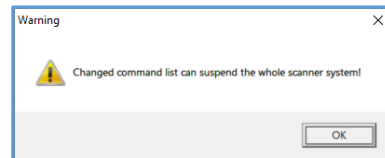
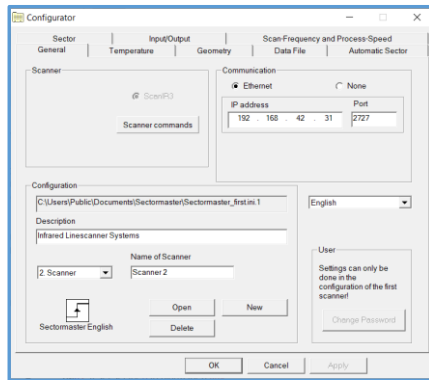
3rd March 2021 by Christian Funk

### Outline:

Ircon ScanView Pro does not offer a convenient way of programming the internal relay (menu structure via **Device Sector**) like with DTDP (GS, ES150 etc)

### Solution:

Using the scheme below allows a list of commands to be added in the **Scanner commands** section of SectorMaster or ZoneMaster.



Open **Scanner commands** in **General** tab. Click **OK** on **Warning**. Add Scanner commands one by one in the following order:

1. *SC04 // find output of internal temperature in sector 0*
2. *TB00000 // turn off the bottom alarm threshold (could be set as min. temperature)*
3. *TT00055 // alarm when result is greater or equal 55°C*
4. *TM01 // set sector 0 to alarm for a time*
  1. Turn off with Timer
  2. Turn off with Trigger
5. *TZ00010 // time for holding alarm 1,0 sec*
6. *RCXANO // Relay mode Automatic Normally Open*
  - 0 forced off
  - 1 forced on
  - A Automatic controlled by Alarm limits
  - NO normally open
  - NC normally closed
7. *PS // writing the commands into the scanner internal EEPROM*
8. *Scanner commands box is highlighted red to show commands are added*

