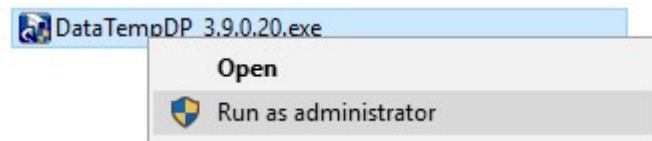
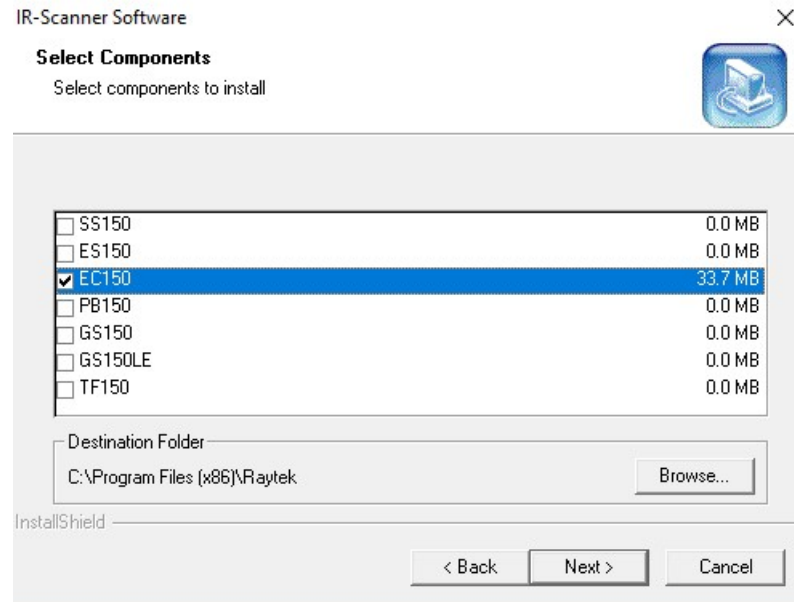


Installing DTDP with OPC

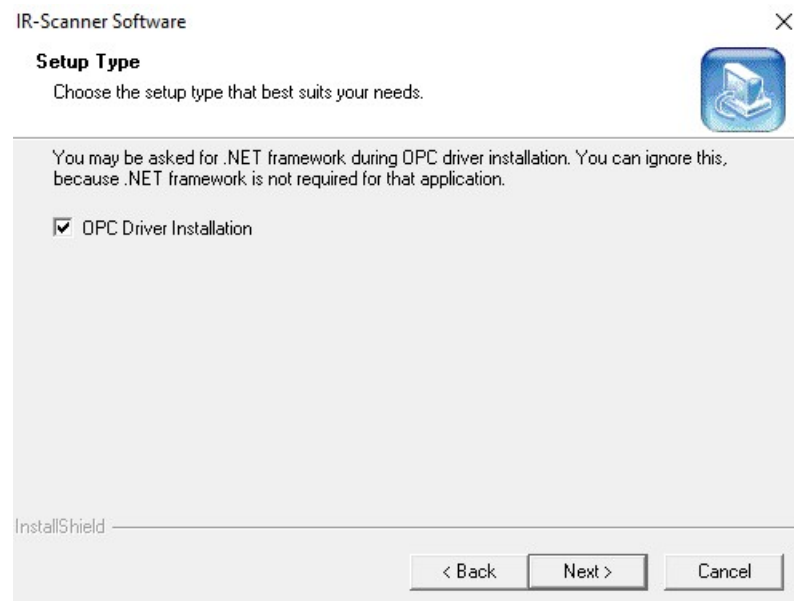
1. Run the application as administrator.



2. Select the software component you want to install e.g EC150.



3. In the next step, ensure that OPC driver installation option is checked.



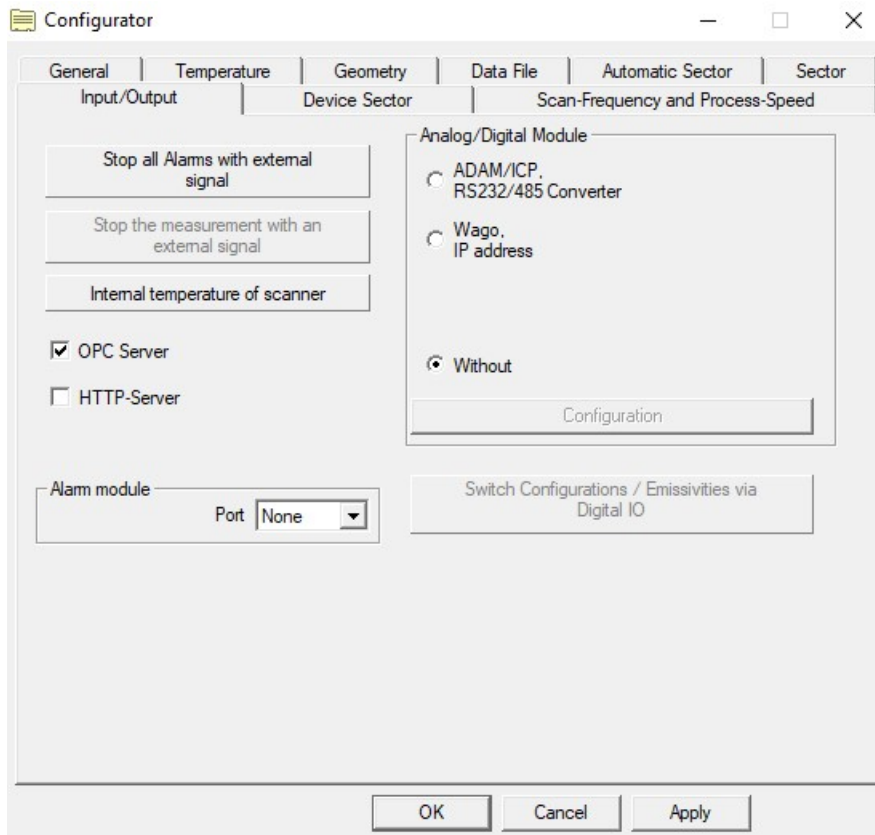
Continue with the installation process by clicking Next

4. Agree to the terms & click on Next so that the OPC core components can be installed.



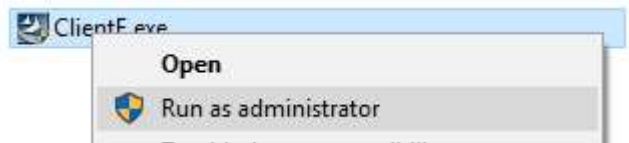
Continue with the installation process.

5. Once the installation is complete, open configurator. Enter all the desired parameters. Ensure that you check the OPC server option under Input/Output tab.

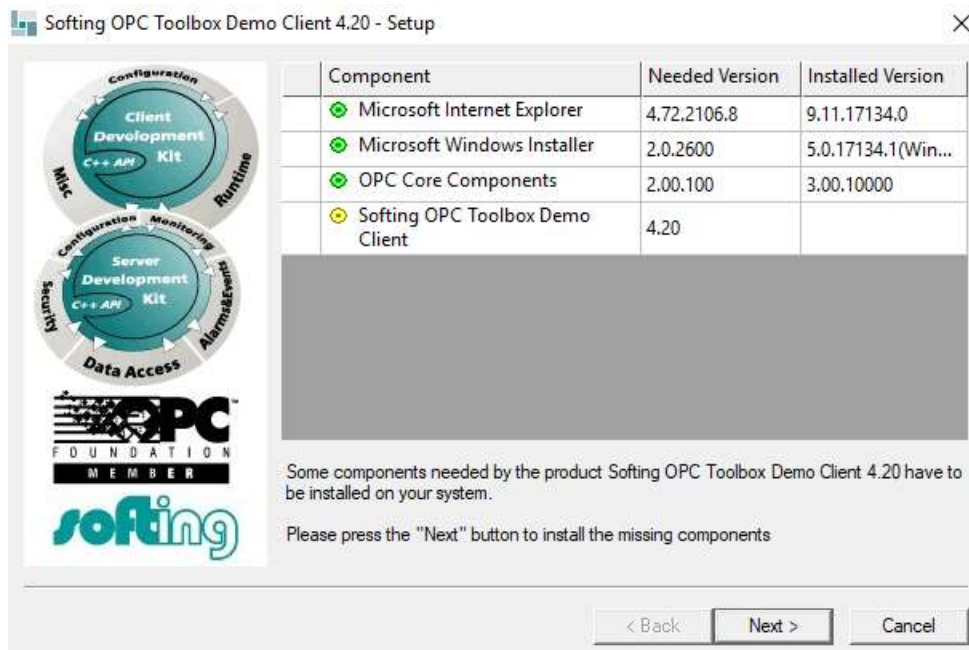


With this option selected, DTDP software acts as an OPC server.

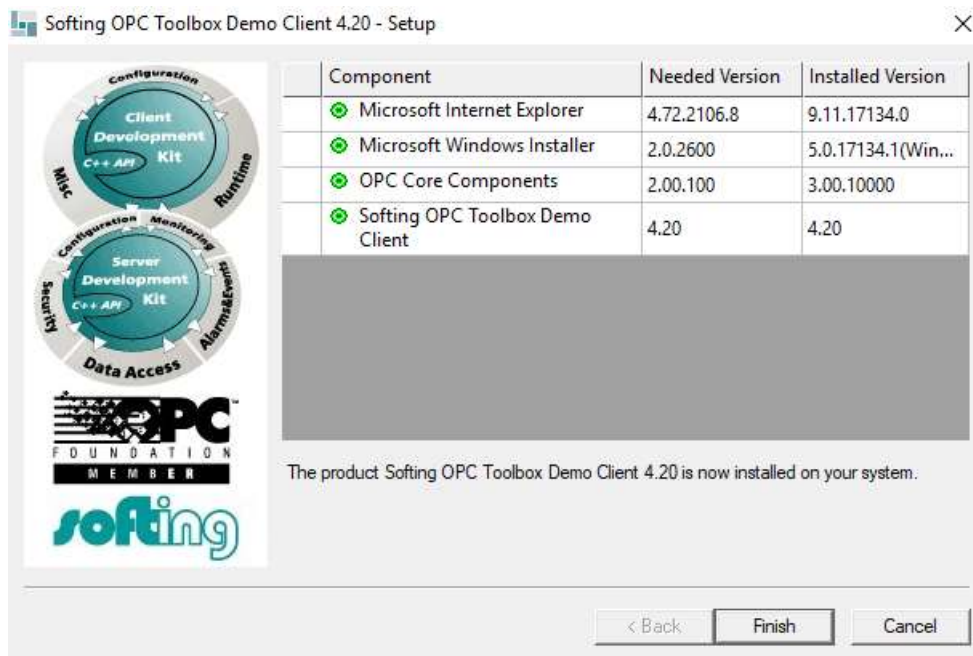
6. Look for a folder called OPC_DemoClient inside the CD supplied with the system. Install the application called ClientE.



7. If you have a windows 10 OS, Select the option shown below & continue the installation.



Once the installation is completed successfully, the screen would look something like this (All components installed).

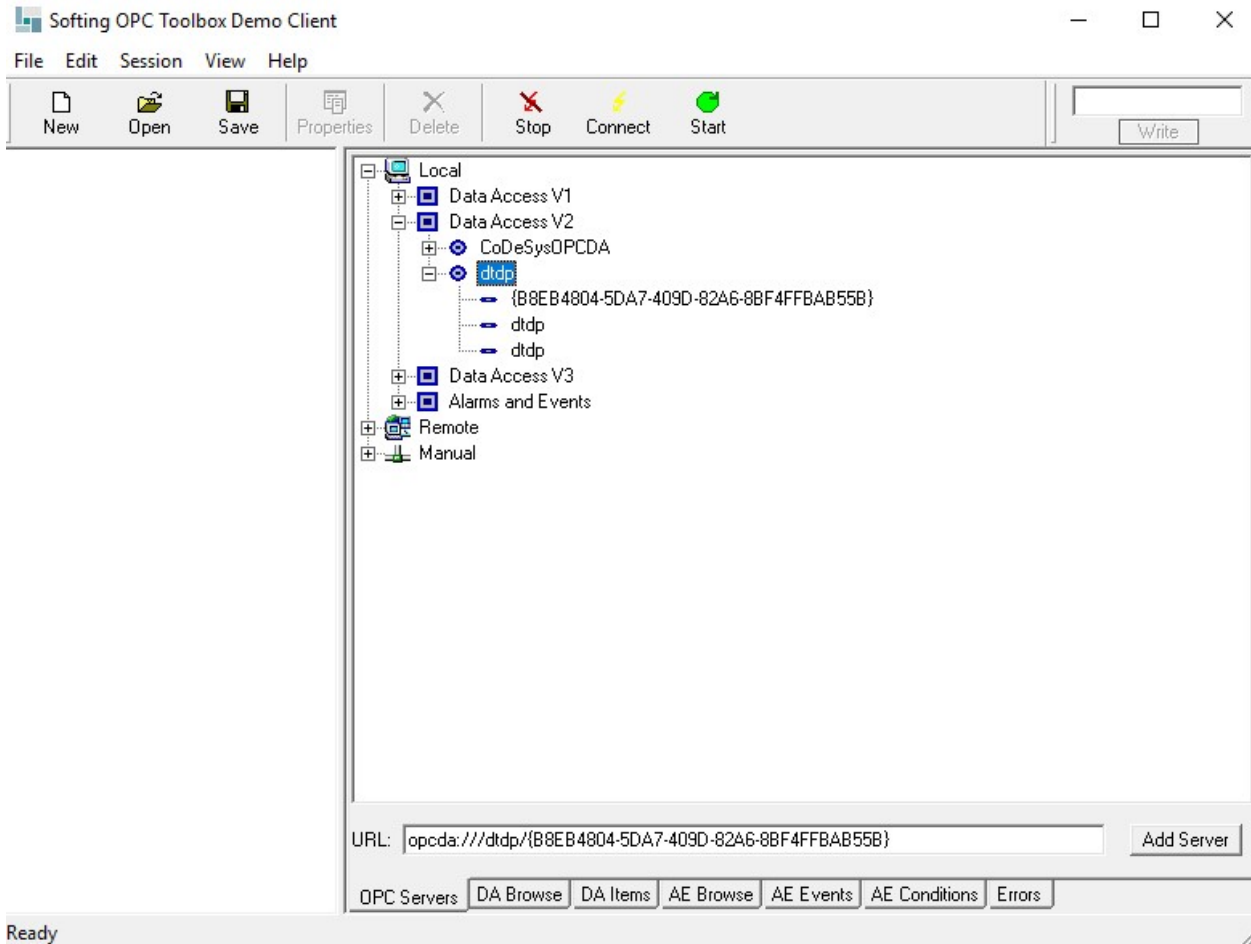


8. Run the DTDP _English (EC150_English) software.

Initializing (3.9.0.20)

Initializing: Scanner 1
Ini-file: EC_first.ini
Init Scanner

- Run the Softing OPC Toolbox Demo Client. Since the client is installed at the same PC as the server, look into Local->Data Access V2. This is where you will find the DTDP server. Double click on DTDP.



- Go to DA Browse tab, right click on the server URL & select “add items for all tags”
This is the list of available tags. As you add changes in the configurator, the tags will be added subsequently.
- Install this Softing OPC Toolbox Demo Client on the client PC & check if you can fetch the data from the tags. In that case look into “Remote”. If the tags are not healthy, resolve your issues with DCOM settings or use a tunneler software to allow the data through the firewall.