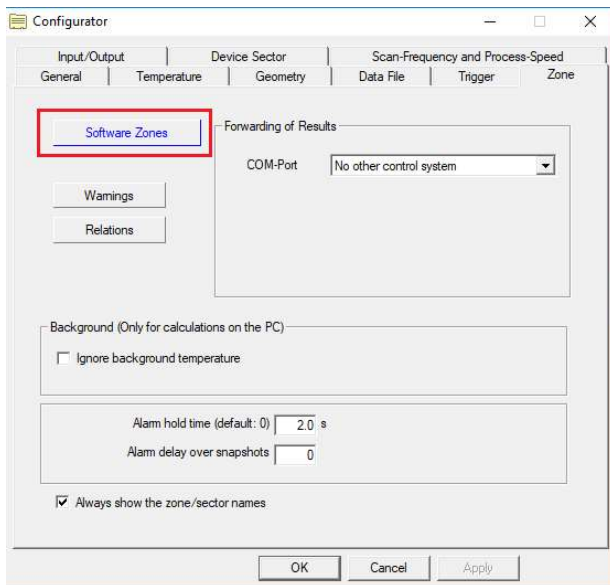


How to have zone results consecutively.

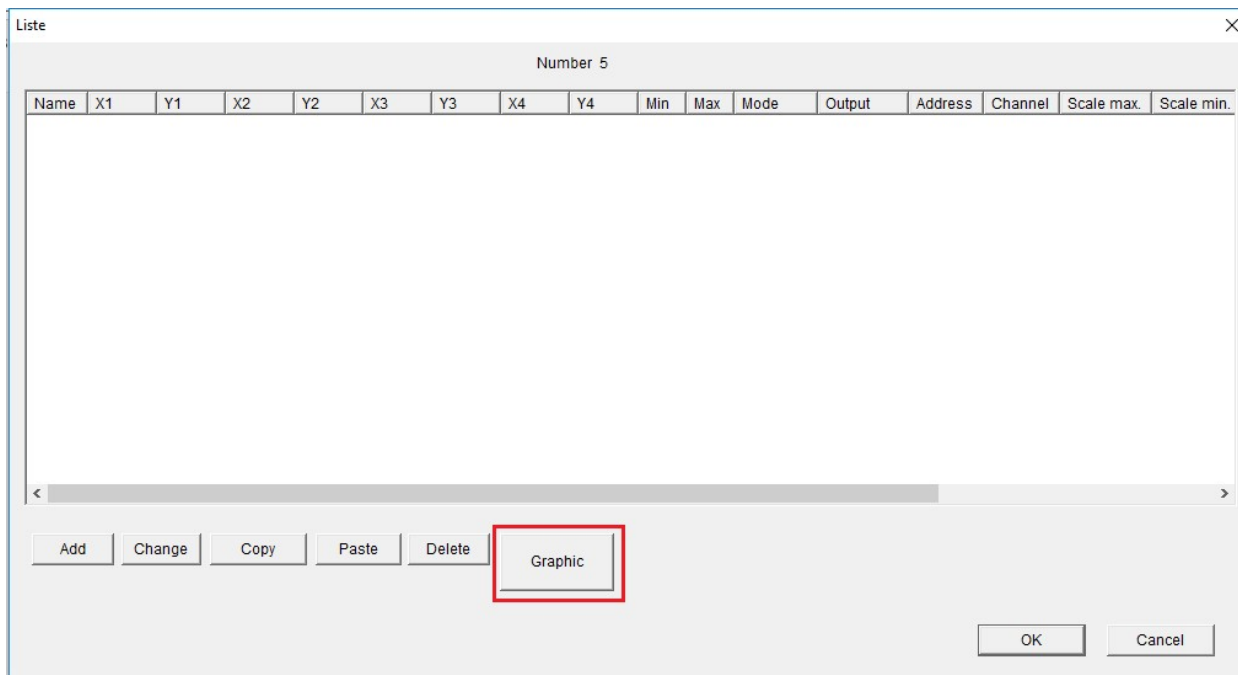
Step 1. Take a reference snapshot, upload it & create zones.

Check the “Always show the zone/sector names” option at the bottom of the window.

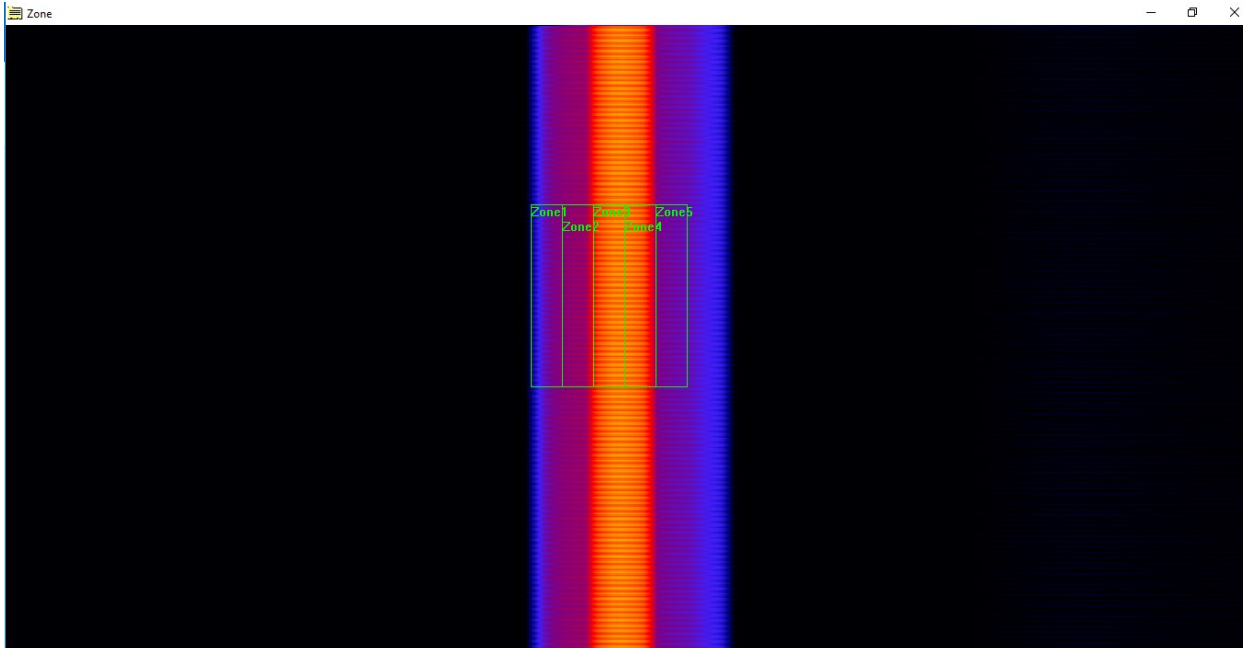
Then navigate to the zone tab of the configurator & click on software zones.



Click on Graphic. Right click & click on snapshot load to upload a previous snapshot.



Right click & select “mouse adding zones” to create as many zones as you want. The resultant image will be as shown below. After the zones are created, close this window.



The X & Y positions in the image represents the true position of the zone borders.

Liste

Number 5

Name	X1	Y1	X2	Y2	X3	Y3	X4	Y4	Min	Max	Mode	Output	Address	Channel	Scale max.	Scale min.
Zone1	168 cm	172 cm	178 cm	172 cm	178 cm	347 cm	168 cm	347 cm	0 °C	0 °C	Maximum	No Module				
Zone2	178 cm	172 cm	188 cm	172 cm	188 cm	347 cm	178 cm	347 cm	0 °C	0 °C	Maximum	No Module				
Zone3	188 cm	172 cm	198 cm	172 cm	198 cm	347 cm	188 cm	347 cm	0 °C	0 °C	Maximum	No Module				
Zone4	198 cm	172 cm	208 cm	172 cm	208 cm	347 cm	198 cm	347 cm	0 °C	0 °C	Maximum	No Module				
Zone5	208 cm	172 cm	218 cm	172 cm	218 cm	347 cm	208 cm	347 cm	0 °C	0 °C	Maximum	No Module				

You can adjust them further by double clicking on the zones. The mode selection represents how the zone temperature will be displayed/saved (e.g. max, average, minimum, etc)

Software Zones: Change

Name: Zone1

X1	168 cm	X2	178 cm
Y1	172 cm	Y2	172 cm
X4	168 cm	X3	178 cm
Y4	347 cm	Y3	347 cm

Result

Mode: Maximum

Min: No Alarm ☒

Max: No Alarm ☒

You MAY set up a Background Temperature as threshold to distinguish object and background.

Output

No Module

(No Module)

DDE (Dynamic Data Exchange) Connection

Name of Service

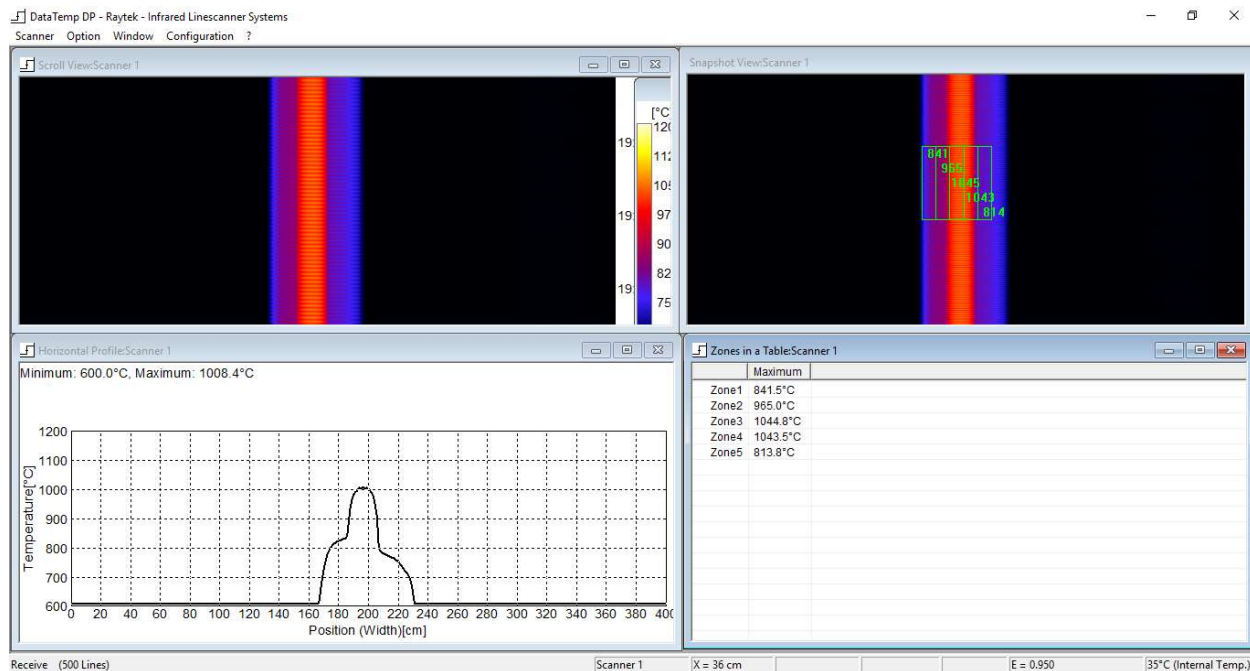
1 / 5

OK Cancel

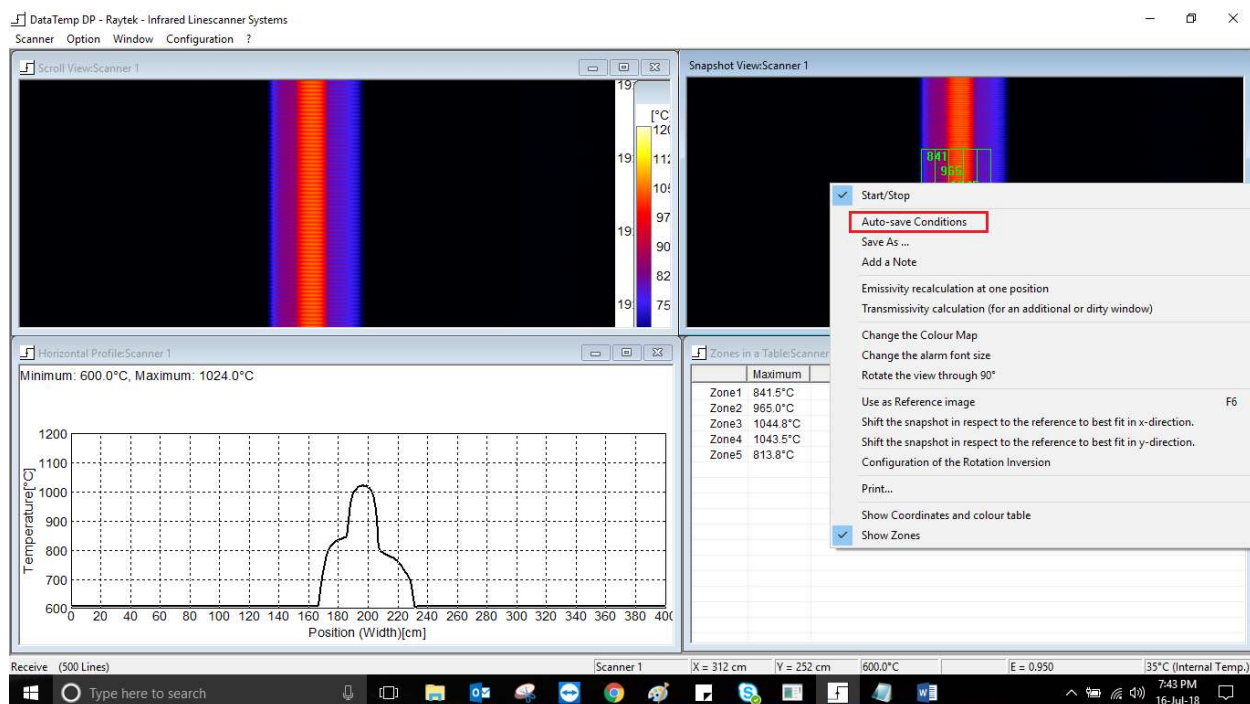
The steps to creating zone is now complete.

Step 2.Run the GS150 software & follow the steps given below

Arrange the view of the GS150 software such that the scroll view, horizontal profile, snapshot view & zones in a table are visible as shown below.



Left click on the snapshot view window. Then right click & select auto save conditions.



Check the “zone results consecutively” option. Then click OK.

How to save snapshots automatically

Time interval: File Type: ☒ bin ☐ tiff ☐ jpeg

Count (one of): ☒ Zone Results Consecutively ☐ Zone Results

Save on alarm:

Save on external signal:

OK

Now with each snapshot, the zone results will be saved in the “store” folder inside a text document.

zones_consecutively.Scanner 1 .txt - Notepad

Date	Zone1	Zone2	Zone3	Zone4	Zone5
Mon Jul 16 19:48:39 2018	840.8	965.9	1042.0	1041.6	810.3
Mon Jul 16 19:48:59 2018	803.9	822.7	935.3	916.1	777.7
Mon Jul 16 19:49:17 2018	802.5	821.1	933.1	912.7	777.5
Mon Jul 16 19:49:33 2018	802.3	820.7	931.9	911.0	777.4
Mon Jul 16 19:49:50 2018	802.1	820.6	930.9	910.0	777.4