

How Do We Do It !

Author: Souvik Chowdhury
Date: 25 Jan 2017

FLUKE.

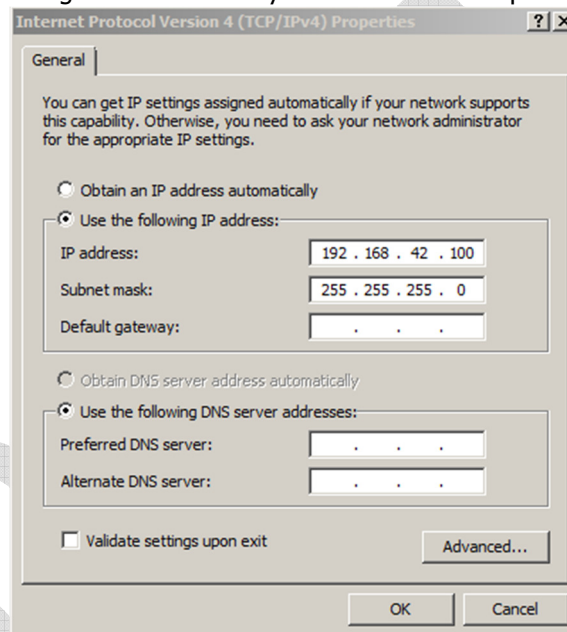
Process
Instruments

Topic: Changing IP address of an Fieldbus Coupler

ScanIR3 Fieldbus Couplers are factory shipped with default IP address of 192.168.42.20. Some customers based on their company IT structure may feel the need to change this default IP address. The procedure to change the default IP address of the Fieldbus Coupler is given below.

This is how we do it!

1. Connect Fieldbus Couplers to your PC using Ethernet cable. Later, power up your Fieldbus Coupler. Configure IP address of your PC such that the first 3 octets of the IP address match with that of the default IP address of the Fieldbus Coupler.
The subnet mask will be assigned automatically. Refer to the example shown below.



2. Ping the IP address of Fieldbus Coupler as `ping 192.168.42.20 -t`. Response as shown below confirms that network connections are intact & Fieldbus Coupler is communicating with PC.

```
C:\WINDOWS\system32\ping.exe

Pinging 192.168.42.20 with 32 bytes of data:
Reply from 192.168.42.20: bytes=32 time=1ms TTL=128
Reply from 192.168.42.20: bytes=32 time=1ms TTL=128
Reply from 192.168.42.20: bytes=32 time=2ms TTL=128
Reply from 192.168.42.20: bytes=32 time=1ms TTL=128
Reply from 192.168.42.20: bytes=32 time=2ms TTL=128
Reply from 192.168.42.20: bytes=32 time=2ms TTL=128
Reply from 192.168.42.20: bytes=32 time=3ms TTL=128
Reply from 192.168.42.20: bytes=32 time=2ms TTL=128
Reply from 192.168.42.20: bytes=32 time=2ms TTL=128
Reply from 192.168.42.20: bytes=32 time=2ms TTL=128
```

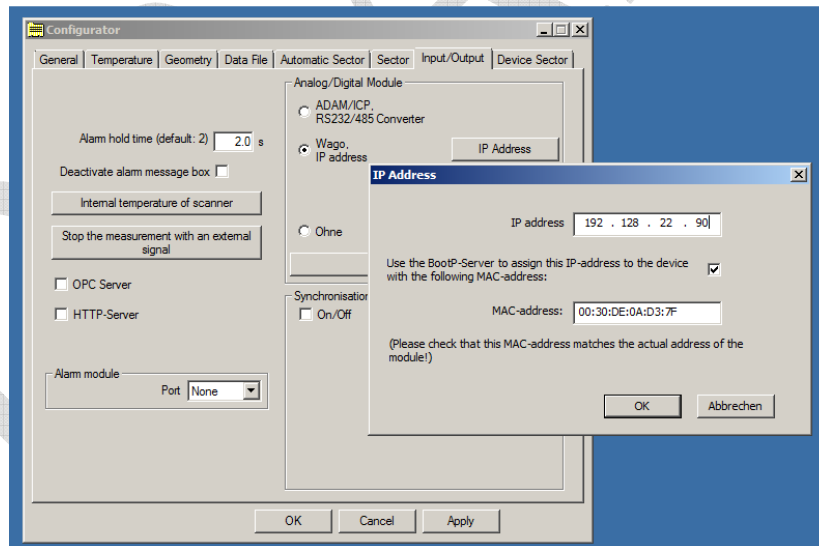
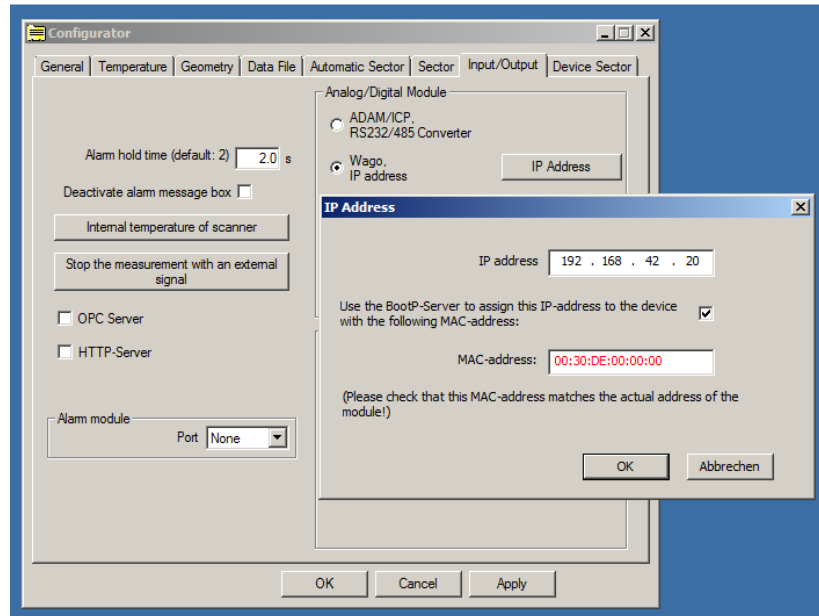
Note: The first three octets of IP address of PC should be same as that of Fieldbus Coupler i.e. for the example given above the IP address of the PC can be 192.168.42.X (where X can be any digit from 0 to 255 except 20)

How Do We Do It !

Author: Souvik Chowdhury

Date: 25 Jan 2017

- Run XX150 Configurator / Sectormaster Configurator / Zonemaster Configurator program. Navigate to Input/Output tab, select Wago Address & Click on IP Address. Modify the old IP address with new IP address e.g.192.128.22.90. Enter the MAC-Address as well. The MAC-Address is sent along with Fieldbus Coupler.



- Click OK & then apply the settings.
- Recycle power of the Fieldbus coupler & and Run XX 150 English/ Sectormaster English/ Zonemaster English program.

How Do We Do It !

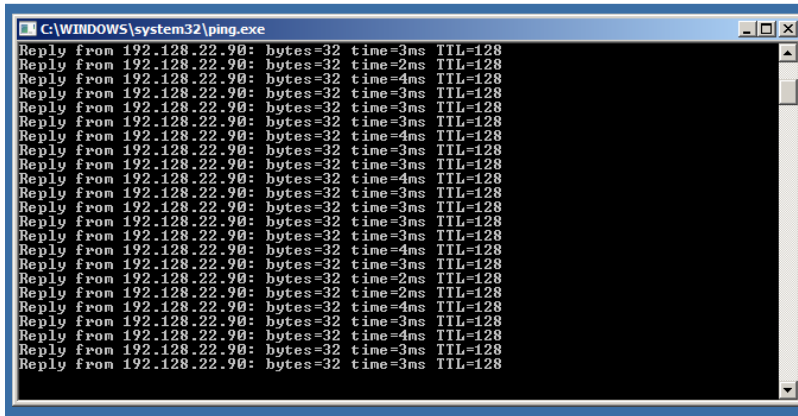
Author: Souvik Chowdhury

Date: 25 Jan 2017

FLUKE.

Process
Instruments

7. Ping the new IP address of Fieldbus Coupler.



```
C:\WINDOWS\system32\ping.exe
Reply from 192.128.22.90: bytes=32 time=3ms TTL=128
Reply from 192.128.22.90: bytes=32 time=2ms TTL=128
Reply from 192.128.22.90: bytes=32 time=4ms TTL=128
Reply from 192.128.22.90: bytes=32 time=3ms TTL=128
Reply from 192.128.22.90: bytes=32 time=3ms TTL=128
Reply from 192.128.22.90: bytes=32 time=3ms TTL=128
Reply from 192.128.22.90: bytes=32 time=4ms TTL=128
Reply from 192.128.22.90: bytes=32 time=3ms TTL=128
Reply from 192.128.22.90: bytes=32 time=3ms TTL=128
Reply from 192.128.22.90: bytes=32 time=3ms TTL=128
Reply from 192.128.22.90: bytes=32 time=3ms TTL=128
Reply from 192.128.22.90: bytes=32 time=3ms TTL=128
Reply from 192.128.22.90: bytes=32 time=4ms TTL=128
Reply from 192.128.22.90: bytes=32 time=3ms TTL=128
Reply from 192.128.22.90: bytes=32 time=2ms TTL=128
Reply from 192.128.22.90: bytes=32 time=4ms TTL=128
Reply from 192.128.22.90: bytes=32 time=3ms TTL=128
Reply from 192.128.22.90: bytes=32 time=4ms TTL=128
Reply from 192.128.22.90: bytes=32 time=3ms TTL=128
Reply from 192.128.22.90: bytes=32 time=3ms TTL=128
```

The above response confirms that IP address of Fieldbus Coupler has changed.